

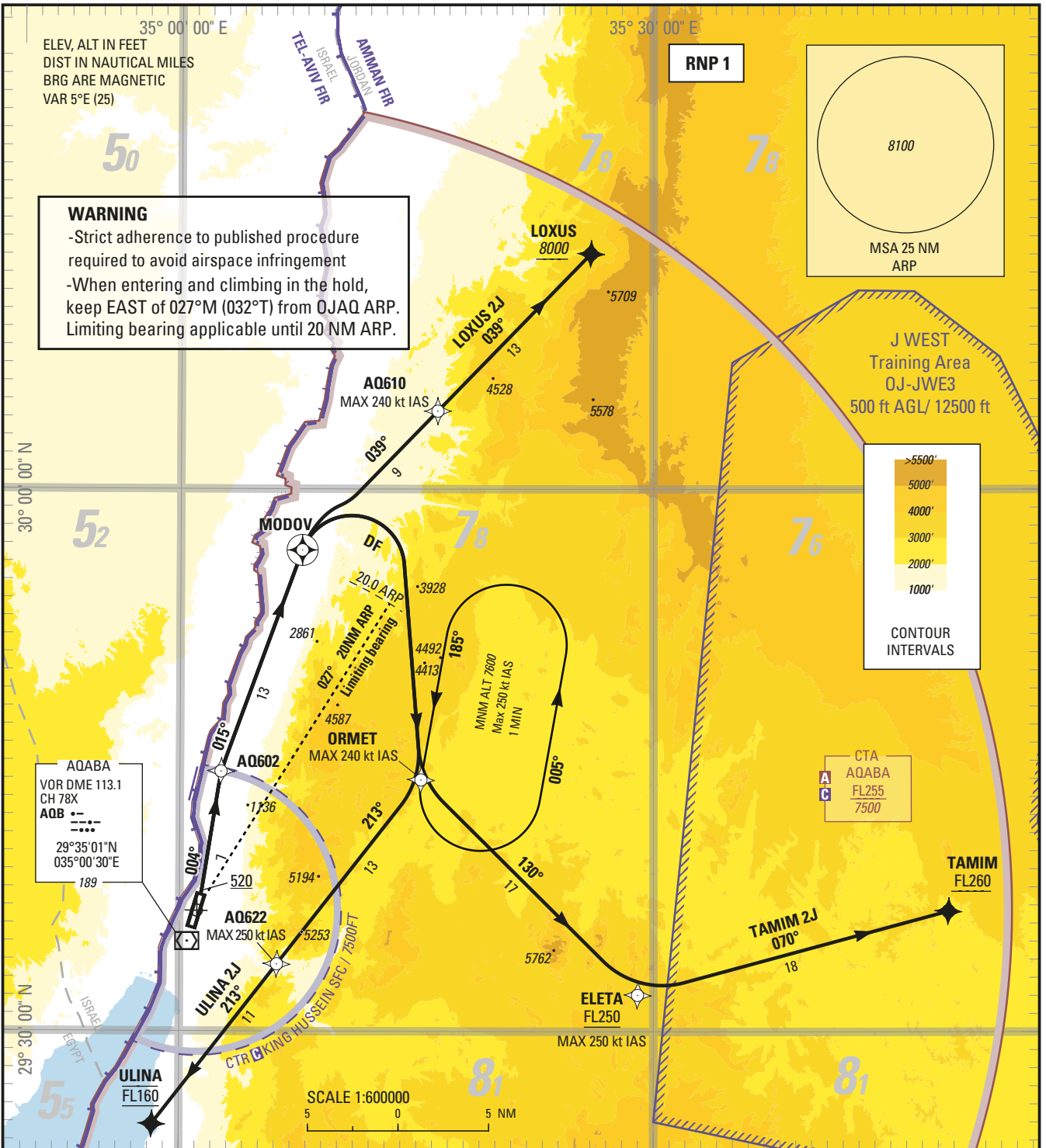
STANDARD DEPARTURE CHART —
INSTRUMENT (SID) — ICAO

TRANSITION LEVEL FL 150
TRANSITION ALTITUDE 13000 ft

King Hussein Tower	119.2
Aqaba Sector	132.425

AQABA/King Hussein Intl. (OJQA)
RNP RWY 01

LOXUS 2J TAMIM 2J ULINA 2J



CHANGE: New IFP procedure

LOXUS 2J
Climb on course 012°M, at 520 proceed to AQ602 on course 004°M, then to MODOV on course 015°M, then to AQ610 (MAX 240 kt IAS), then to LOXUS at or above 8000.

TAMIM 2J
Climb (1) on course 012°M, at 520 proceed to AQ602 on course 004°M, then to MODOV on course 015°M, then turn right direct to ORMET (MAX 240 kt IAS), then to ELETA (MAX 250 kt IAS) at or above FL250 (2) then to TAMIM at or above FL260.
(1) PDG: 3.6% up to 5300.

(2) **ATS climb gradient: 7.5%** up to FL250. Advise ATC if unable to ensure the ATS climb gradient.
If unable to comply with ATS constraint, holding over ORMET may be used at or above 7600 (MAX 250 kt IAS) to continue the climb before being cleared by ATC to proceed direct to ELETA.

ULINA 2J
Climb (1) on course 012°M, at 520 proceed to AQ602 on course 004°M, then to MODOV on course 015°M, then turn right direct to ORMET (MAX 240 kt IAS), then to AQ622 (MAX 250 kt IAS), then to ULINA at FL160 (2).

(1) PDG: 3.6% up to 5300.
(2) **ATS climb gradient: 4.1%** up to FL160. Advise ATC if unable to ensure the ATS climb gradient.
If unable to comply with ATS constraint, holding over ORMET may be used at or above 7600 (MAX 250 kt IAS) to continue the climb before being cleared by ATC to proceed direct to AQ622.

Holding instruction

Path Descriptor	Waypoint Identifier	Inbound Course °M (°T)	Leg Distance	Turn direction	Minimum Altitude (ft/FL)	Maximum Altitude (ft/FL)	Speed Limit (kt)	Magnetic Variation	Navigation Specification
Hold	ORMET	185 (190.0)	1 min	L	7600	14000	250	+5.0	RNP 1

Route Description: RNP SID RWY01

SID LOXUS 2J											
Serial Number	Path Descriptor	Waypoint Identifier	Fly - Over	Course °M (°T)	Magnetic Variation	Distance (NM)	Turn direction	Altitude (ft/FL)	MAX IAS (kt)	VPA/TCH (°/ft)	Navigation Accuracy (NM)
10	CA	-	-	012 (017.0)	+5.0	-	-	+520	-	-	RNP 1
20	CF	AQ602	-	004 (009.0)	+5.0	8.6	-	-	-	-	RNP 1
30	CF	MODOV	Y	015 (020.0)	+5.0	13.0	-	-	-	-	RNP 1
40	TF	AQ610	-	039 (044.0)	+5.0	9.5	-	-	-240	-	RNP 1
50	TF	LOXUS	-	039 (044.1)	+5.0	13.3	-	+8000	-	-	RNP 1
SID TAMIM 2J											
Serial Number	Path Descriptor	Waypoint Identifier	Fly - Over	Course °M (°T)	Magnetic Variation	Distance (NM)	Turn direction	Altitude (ft/FL)	MAX IAS (kt)	VPA/TCH (°/ft)	Navigation Accuracy (NM)
10	CA	-	-	012 (017.0)	+5.0	-	-	+520	-	-	RNP 1
20	CF	AQ602	-	004 (009.0)	+5.0	8.6	-	-	-	-	RNP 1
30	CF	MODOV	Y	015 (020.0)	+5.0	13.0	-	-	-	-	RNP 1
40	DF	ORMET	-	-	-	-	R	-	-240	-	RNP 1
50	TF	ELETA	-	130 (134.7)	+5.0	16.9	-	+FL250	-250	-	RNP 1
60	TF	TAMIM	-	070 (074.8)	+5.0	17.8	-	+FL260	-	-	RNP 1
SID ULINA 2J											
Serial Number	Path Descriptor	Waypoint Identifier	Fly - Over	Course °M (°T)	Magnetic Variation	Distance (NM)	Turn direction	Altitude (ft/FL)	MAX IAS (kt)	VPA/TCH (°/ft)	Navigation Accuracy (NM)
10	CA	-	-	012 (017.0)	+5.0	-	-	+520	-	-	RNP 1
20	CF	AQ602	-	004 (009.0)	+5.0	8.6	-	-	-	-	RNP 1
30	CF	MODOV	Y	015 (020.0)	+5.0	13.0	-	-	-	-	RNP 1
40	DF	ORMET	-	-	-	-	R	-	-240	-	RNP 1
50	TF	AQ622	-	213 (218.0)	+5.0	12.9	-	-	-250	-	RNP 1
60	TF	ULINA	-	213 (217.9)	+5.0	11.2	-	@FL160	-	-	RNP 1

Aeronautical Data Tabulation: IAC PBN SID RWY01

WAYPOINT LIST		
Waypoint / Fix	Latitude	Longitude
AQ602	29°44'22.113"N	035°02'36.069"E
MODOV	29°56'36.761"N	035°07'43.131"E
AQ610	30°03'27.020"N	035°15'19.592"E
LOXUS	30°13'00.900"N	035°26'00.700"E
ORMET	29°43'54.464"N	035°15'16.202"E
ELETA	29°32'00.800"N	035°29'00.100"E
TAMIM	29°36'40.000"N	035°48'40.000"E
AQ622	29°33'42.680"N	035°06'09.861"E
ULINA	29°24'51.000"N	034°58'17.000"E